



Zebra Dimensioning™ Certified Mobile Parcel and Mobile Parcel

Capture parcel dimensions and calculate shipping charges on Zebra mobile computers — all with the press of a button

The volume of parcel traffic continues to grow, along with the impact of the inability to capture dimensions quickly, accurately and effectively at the point of pickup or drop-off. Inaccurate dimensions result in undercharging, loss of revenue, reduced profitability and costly disputes that erode customer service quality, customer satisfaction and customer retention. And lack of visibility into package dimensions at pickup or drop-off can result in overestimation of warehouse space requirements, reduced load efficiencies and vehicle utilization — and increased transportation costs. Capturing dimensions manually via a tape measure inserts time into processes, reducing workforce productivity and efficiency — and invites errors. A mobile computer could automate and error-proof the capture of parcel dimensions at the point of entry into the shipping network. But in order to use the dimensions to charge customers, the mobile application's accuracy would need to be certified by Weights and Measures regulators — something that hasn't existed, until today.

Introducing Zebra Certified Mobile Parcel and Mobile Parcel

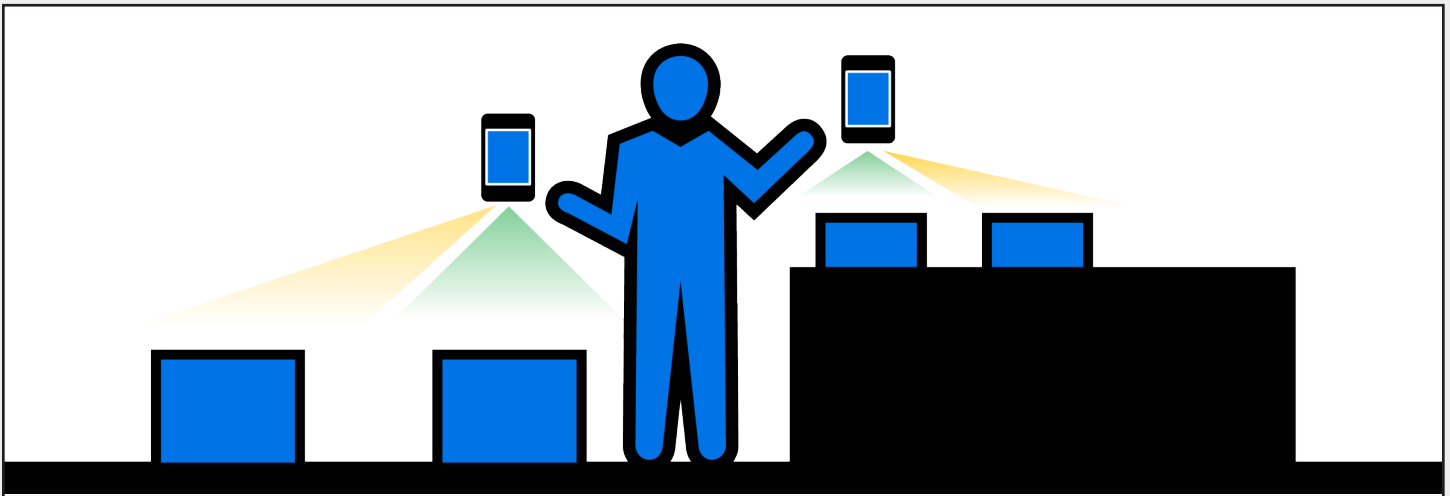
Zebra Dimensioning™ Certified Mobile Parcel

[Capture accurate parcel dimensions to instantly calculate shipping charges.](#) Certified Mobile Parcel is another industry first from Zebra — the first internationally weights and measures certified, fully integrated handheld mobile dimensioning solution. Built for Zebra mobile computers, Certified Mobile Parcel enables mobile dimensioning, certified as legal for trade to provide accurate calculation of shipping charges at the point of parcel pickup and beyond — from homes and businesses to parcel shops, satellite pick up points and more. And there are no snap-on accessories to impact ergonomics, ease of use, durability, reliability or calibration.

Now, the same Zebra mobile computers that can streamline everyday processes for drivers, associates in parcel shops, warehouse workers and more can also capture accurate parcel dimensioning in seconds, with the simple press of one button. The result? Accurate dimensioning. Accurate pricing. Reduced disputes. Profitability protection. Better customer service. And more value from the Zebra mobile devices that power your operations.

Zebra Dimensioning™ Mobile Parcel

[Streamline operations with visibility into parcel dimensions and space requirements.](#) Since parcel dimensions can be valuable for more than calculations of accurate shipping charges, Zebra also offers a non-certified option, Mobile Parcel. This cost-effective option provides visibility into accurate parcel dimensions wherever it will help streamline warehouse and fleet operations — from improved load planning to allocation of warehouse space.



With Certified Mobile Parcel, capturing accurate parcel dimensions to calculate accurate shipping charges is as simple as capturing a barcode. Workers can simply point the red aiming dot at the top surface of a parcel and press the dimensioning button. With intuitive and flexible aiming, accurate dimensions will be captured whether packages are scanned straight down or at an angle, on a counter or the floor. And with Mobile Parcel, warehouse workers can capture item dimensions during picking to automatically calculate the most cost-effective shipping container, maximize load and fleet efficiency and more.

Advanced features put Zebra Mobile Dimensioning solutions in a class of their own

Certified Mobile Parcel and Mobile Parcel are loaded with more industry-firsts from Zebra

Fully integrated

There are no additional external snap-on accessories that can impact overall size, weight, rugged specifications, comfort and reliability. If the mobile computer is dropped, it will remain in calibration — unlike a device with an attached dimensioning accessory that may need re-certification.

Capture dimensions anywhere

This fully mobile solution allows you to capture dimensions anywhere in your operations — doorstep collection in homes and businesses, parcel drop off locations, warehouses, depots and hubs.

International Weights and Measures pre-certified

Zebra Dimensioning — Certified Mobile Parcel is supplied pre-certified by NTEP (US), OIML (EU/EFTA), MC (Canada)¹, NMI (Australia) and MBIE (New Zealand) at launch, with additional certifications in the future.

Fast and easy integration

This complete solution includes an integrated Time of Flight sensor; pre-installed and sealed Zebra Dimensioning Service and application software; and a Zebra Mobile Dimensioning Application Programming Interface (API) that makes integrating the capture of parcel dimensions into enterprise backend systems as easy as integrating the capture of barcodes.

Rapid capture of practically any parcel

Capture a wide range of sizes and box types, with any background. Box dimensions can range from 10 cm/3.9 in. per side to 100 cm/47.24 in. per side (dependent upon the certifying organization). Boxes can be plain, wrapped or printed with graphics — and tape and labels won't affect dimensioning capabilities.

Capture dimensions in virtually any environment

Parcels can be placed on a counter or the floor — cement, tile or carpet. And dimensions can be captured in any lighting — in direct sunlight outdoors, any type of indoor lighting, a dark room or outside at night.



Comfortable 'no-miss' aiming

Simply place the entire parcel in the camera viewfinder window and position the red aiming dot in the center of the top surface of the parcel for reliable first-time every-time capture of accurate dimensions — even if there are other parcels visible in the camera window. And since you can aim straight down or at an angle, you can easily capture dimensions regardless of whether parcels are on the floor or counter.

Easy to use software

The Zebra client software is simple, straightforward and intuitive, enabling rapid adoption — your users will be up and running with minimal training. With the API, it's easy to integrate Mobile Dimensioning functionality into your line of business applications, providing a simple and seamless user experience.

Capture accurate dimensions in just seconds

It takes less than five seconds to capture dimensions — just point and capture — infinitely faster than using a tape measure. The automated capture using the integrated Time of Flight camera ensures certified legal for trade accuracy — the opportunity for keying errors during data entry eliminated.

Improve loading and warehouse optimization with a non-certified option

In addition to determining accurate shipping charges, dimensioning data can also be utilized to optimize enterprise operations. Zebra Dimensioning — Mobile Parcel, a non-certified lower cost option, allows enterprises to capture and send dimension information farther upstream in key business processes, providing earlier visibility to better plan loads and warehouse space requirements.



The many benefits of Zebra Mobile Dimensioning

Improving operations from the point of pickup to the point of delivery

Increase workforce productivity and efficiency

Now, instead of using a tape measure, workers can simply point and shoot to capture dimensions, anywhere. The time saved allows you to process more parcels per day, helping shippers accommodate the constant increase in parcel volumes.

Increase revenue

Shipments that arrive at logistics centers with inaccurate measurements create the opportunity for undercharging and lost revenue. And billing errors can cost freight companies as much as 3 to 7 percent in additional costs.² With Zebra Dimensioning — Certified Mobile Parcel, shipping costs are always accurate and provable, protecting revenue and profitability.

Eliminate the high cost of dispute and damage claims

The capture of certified accurate dimensions eliminates disputes over dimension inaccuracies. And since a photo of each parcel is captured as part of the dimensioning process, parcel condition at pickup is undeniably documented, eliminating erroneous claims that damage occurred between pickup and delivery.

Increase utilization and ROI for the delivery fleet

Visibility into the dimensions of incoming packages at pickup enables better upfront load planning. With Zebra Dimensioning — Mobile Parcel, truckloads can be optimized, reducing the number of trips to move parcels and the associated costs — including drivers, fuel and vehicle wear and tear and maintenance.

Increase warehouse utilization

Lack of visibility into measurements at pickup or drop-off results in over-estimation of warehouse space requirements. And inaccurate measurements lead to an estimated 20 percent sub-utilization of warehouse space due to inefficient slotting.³ Zebra Dimensioning — Mobile Parcel enables better warehouse utilization, freeing up space to be re-purposed to better support revenue generation and other business operations.

Where can you put Zebra Mobile Dimensioning solutions to work?

Use Zebra Dimensioning Certified Mobile Parcel and Mobile Parcel wherever dimensions will protect revenue and streamline operations

Certified Mobile Parcel

- Parcel pickup: doorstep collection at homes and businesses at the network edge
- Parcel shops: carrier collection points
- Large automated sorting hub: revenue retention spot checks for dimensioning accuracy

Mobile Parcel

- Regional warehouses and depots: receiving, cross docking, loading
- Large automated sorting hub: disaster recovery

For more information, visit www.zebra.com/zebra-dimensioning

FACT SHEET

ZEBRA DIMENSIONING — CERTIFIED MOBILE PARCEL AND MOBILE PARCEL

Footnotes

1. Note that while Zebra components are pre-certified with all certifying organizations, Canada, Australia and New Zealand require inspectors to visit the customer location to issue final approval.
2. Outsourcing freight audit & payment: 10 checkpoints; Rolf Bax; October 8, 2015; www.controlpay.com/blog/outsourcing-freight-audit-payment-10-checkpoints/
3. Seven Ways Dimensioning Can Save Your Parcel Operations Money; Omar Dajani; October 10, 2017; <http://parcelindustry.com/print-article-4994-permanent.html>



NA and Corporate Headquarters
+1 800 423 0442
inquiry4@zebra.com

Asia-Pacific Headquarters
+65 6858 0722
contact.apac@zebra.com

EMEA Headquarters
zebra.com/locations
contact.emea@zebra.com

Latin America Headquarters
zebra.com/locations
la.contactme@zebra.com